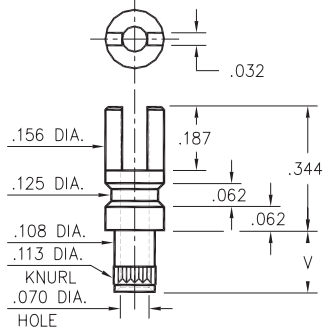


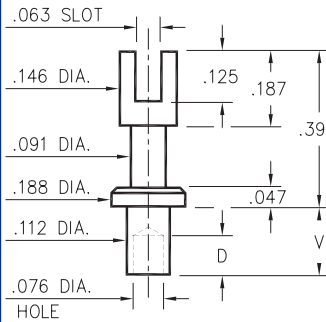
2715



2715-X-01-XX-00-00-07-0
Swage mount in .116 hole

- X -	Board Thickness	Length V
2	.062	.109
3	.094	.141
4	.125	.172

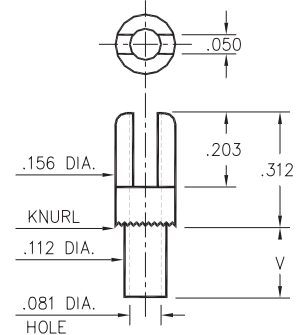
2809



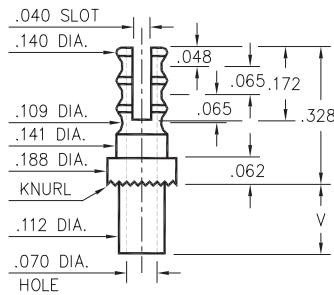
2809-X-01-XX-00-00-07-0
Swage mount in .116 hole

- X -	Board Thickness	Length V	Depth D
1	.031	.078	.068
2	.062	.109	
3	.094	.141	.098
4	.125	.172	

2701/2808



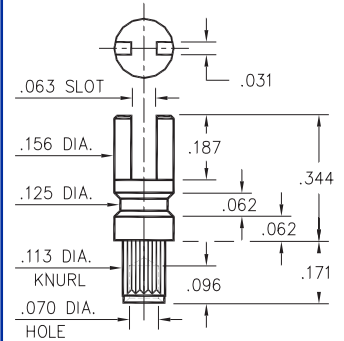
2701-X-01-XX-00-00-07-0
Swage mount in .116 hole



2808-X-01-XX-00-00-07-0
Swage mount in .116 hole

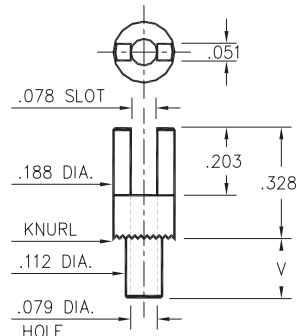
- X -	Board Thickness	Length V
1	.031	.075
2	.062	.105
3	.094	.135
4	.125	.165

2762



2762-4-01-XX-00-00-07-0
Swage mount in .116 hole
For .125 thick board

2807



2807-X-01-XX-00-00-07-0
Swage mount in .116 hole

- X -	Board Thickness	Length V
1	.031	.078
2	.062	.109
3	.094	.140
4	.125	.171

SPECIFICATIONS

PIN MATERIAL:
Brass Alloy 360, 1/2 Hard
Swage pins are annealed

DIMENSION IN INCHES
TOLERANCES ON:
LENGTHS: ±.005
DIAMETERS: ±.002
ANGLES: ± 2°

ORDER CODE: 2XXX - X - 01 - XX - 00 - 00 - 07 - 0

BASIC PART #

SPECIFY PIN FINISH:
01 200µ" TIN/LEAD OVER NICKEL
80 200µ" TIN OVER NICKEL
44 300µ" SILVER OVER COPPER
50 300µ" ELECTRO-SOLDER (60/40 SnPb)

